

Flower Beds 2

A Numicon problem-solving activity for pairs

What you will need (per pair)

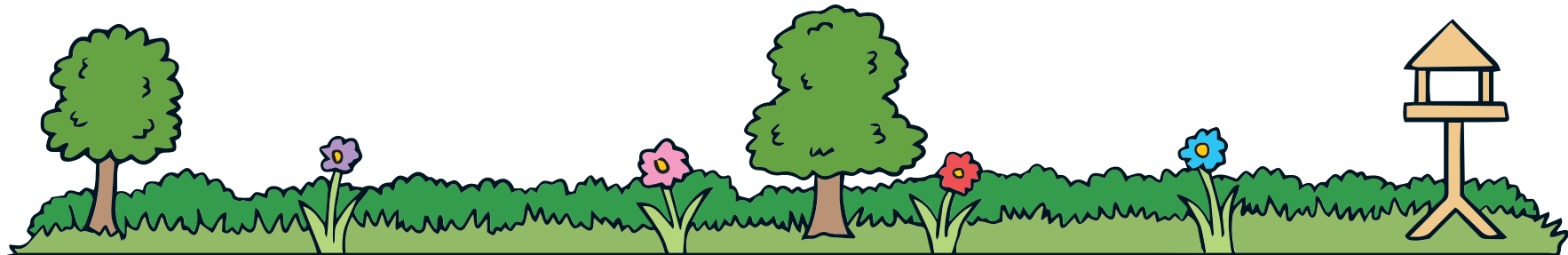
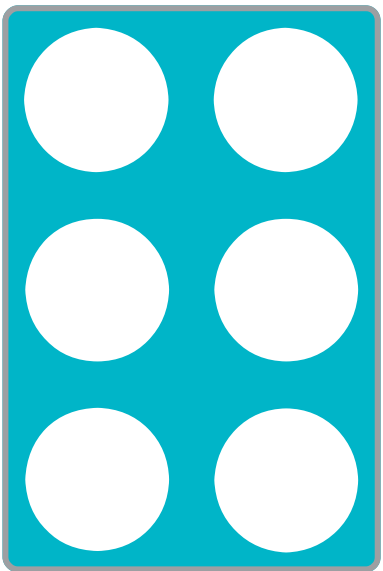
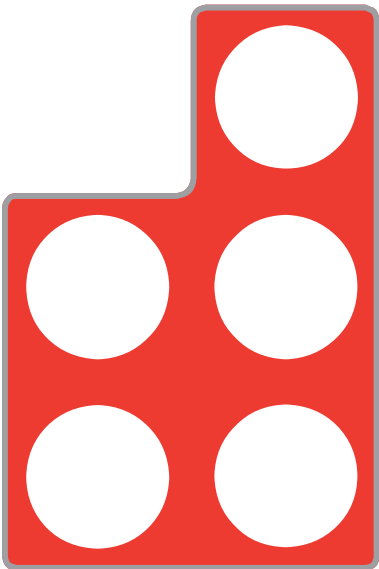
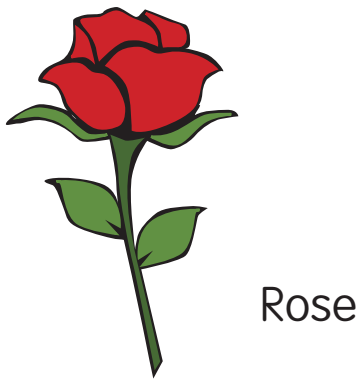
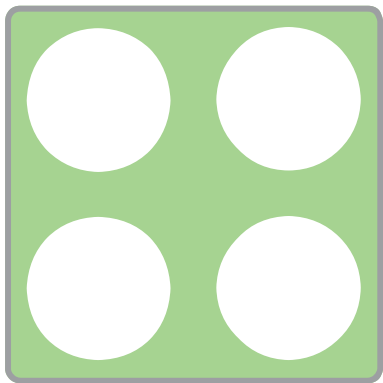
- A copy of this sheet and the Park Board sheet.
- Please note:** these are A3 documents and need to be printed at 100%
- Numicon 4-, 5- and 6-shapes

What to do

- In this activity you are a park-keeper. Your job is to plant spring flowers in a park by the river. The board sheet is your park.
- You have green tulips, red roses and light blue irises to plant in the empty space on the board.
- Can you fill the park with **two** different flowers? You must use the same number of each type of flower. You can choose tulips, roses or irises, using the Numicon Shapes shown.

Extensions and questions

- What if you had to use all three flowers but still use the same number of each; how many ways can you find to do this?
- Can you explain what you have discovered, using your knowledge of times tables?



A Numicon problem-solving activity for pairs

River

